



## Seal Type 22 - Rubber Bellow (EN 12756)

### PRODUCT DESCRIPTION

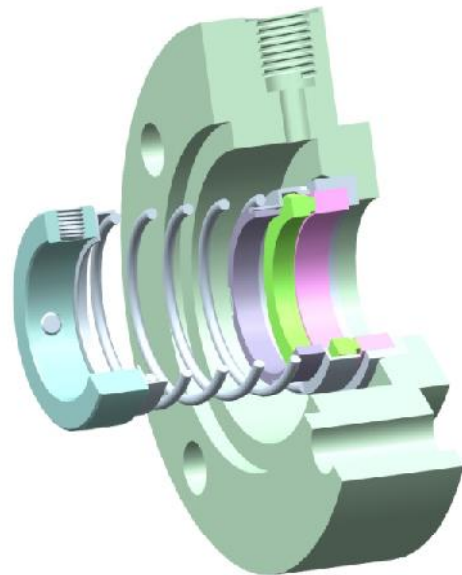
The Seal Type 22 is a Compact Single Spring Rubber Bellows Mechanical Seals for universal general purpose, Water / Water Based solution like Oils, Fuels and Other Fluids even with some Content with Abrasive and for a very wide operating condition designed destined for Centrifugal pump. Rotary Equipment and Industrial application (Food Processing, Water Systems, Waste Water Treatment for Petrochemical Processing, Pulp and Paper.

### DESIGN FEATURES

Single, low cost and mass produced Mechanical Seal with Rubber Bellow. Central Point Non-Clogging Coil Spring Seal. Spring Design Seal is suitable for Dual Direction of Shaft Rotation. Bellow Design Seals for Pressure supported and eliminates folds. Bellow Seals Protecting against Twisting. Unitize easy-to-fit design seals

### MATERIALS

Seal Ring Faces : Carbon, SiC and TC  
Seat Faces : NiR, Ceramic, SiC and TC  
Elastomer : Viton, Neoprene, EPDM, NBR and Buna-N  
MOC : SS 304 / SS 316

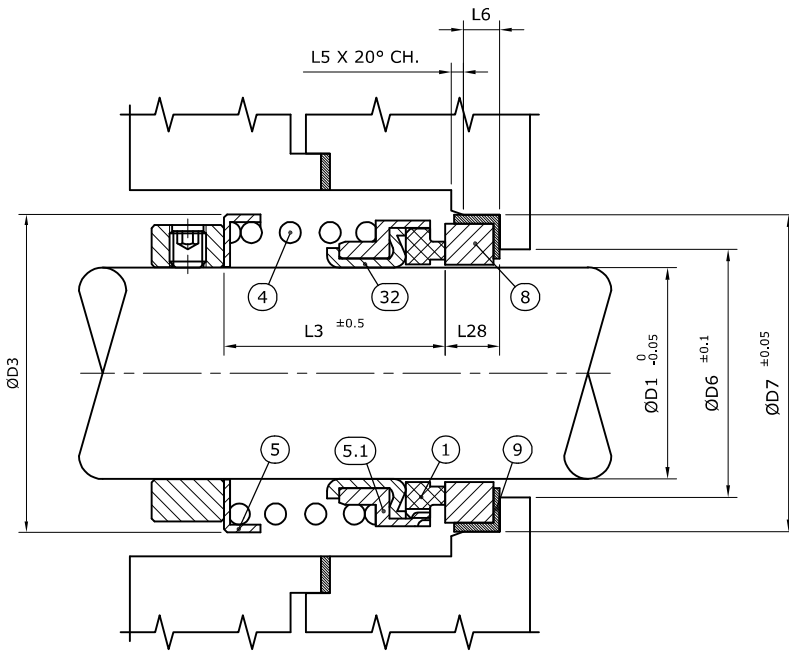


### OPERATING CAPABILITIES

Shaft Dia. : 10mm to 100 mm  
Pressure : Up to 8 bar  
Temperature: -20°C to 180°C  
Speed : 3000 r.p.m.

**Type - 22**

**Rubber Bellows**



| Part No. | Description   |
|----------|---------------|
| 1        | Seal Ring     |
| 4        | Spring        |
| 5        | Spring Holder |
| 5.1      | Spring Holder |
| 8        | Seat          |
| 09       | Packing       |
| 32       | Bellow        |

| SEAL SIZE |       |      |       |      |     |     |      |
|-----------|-------|------|-------|------|-----|-----|------|
| D1        | D3    | D6   | D7    | L3   | L5  | L6  | L28  |
| 10.0      | 21.0  | 17.0 | 21.0  | 18.0 | 1.5 | 4.0 | 6.6  |
| 12.0      | 24.0  | 19.0 | 23.0  | 20.0 | 1.5 | 4.0 | 6.6  |
| 14.0      | 25.0  | 21.0 | 25.0  | 20.0 | 1.5 | 4.0 | 6.6  |
| 16.0      | 26.0  | 23.0 | 27.0  | 22.0 | 1.5 | 4.0 | 6.6  |
| 18.0      | 28.0  | 27.0 | 33.0  | 22.0 | 2.0 | 5.0 | 7.5  |
| 20.0      | 30.0  | 29.0 | 35.0  | 22.0 | 2.0 | 5.0 | 7.5  |
| 22.0      | 34.0  | 31.0 | 37.0  | 22.0 | 2.0 | 5.0 | 7.5  |
| 24.0      | 38.5  | 33.0 | 39.0  | 23.0 | 2.0 | 5.0 | 7.5  |
| 25.0      | 38.5  | 34.0 | 40.0  | 25.0 | 2.0 | 5.0 | 7.5  |
| 28.0      | 42.5  | 37.0 | 43.0  | 33.0 | 2.0 | 5.0 | 7.5  |
| 30.0      | 45.0  | 39.0 | 45.0  | 33.0 | 2.0 | 5.0 | 7.5  |
| 32.0      | 46.0  | 42.0 | 48.0  | 33.0 | 2.0 | 5.0 | 7.5  |
| 33.0      | 46.0  | 42.0 | 48.0  | 33.0 | 2.0 | 5.0 | 7.5  |
| 35.0      | 49.0  | 44.0 | 50.0  | 33.0 | 2.0 | 5.0 | 7.5  |
| 38.0      | 52.5  | 49.0 | 56.0  | 33.0 | 2.0 | 6.0 | 9.0  |
| 40.0      | 56.0  | 51.0 | 58.0  | 33.0 | 2.0 | 6.0 | 9.0  |
| 43.0      | 58.0  | 54.0 | 61.0  | 33.0 | 2.0 | 6.0 | 9.0  |
| 45.0      | 62.0  | 56.0 | 63.0  | 33.0 | 2.0 | 6.0 | 9.0  |
| 48.0      | 65.0  | 59.0 | 66.0  | 38.0 | 2.0 | 6.0 | 9.0  |
| 50.0      | 68.0  | 62.0 | 70.0  | 38.0 | 2.5 | 6.0 | 9.5  |
| 53.0      | 72.0  | 65.0 | 73.0  | 38.0 | 2.5 | 6.0 | 11.0 |
| 55.0      | 74.0  | 67.0 | 75.0  | 40.0 | 2.5 | 6.0 | 11.0 |
| 58.0      | 79.0  | 70.0 | 78.0  | 40.0 | 2.5 | 6.0 | 11.0 |
| 60.0      | 79.0  | 72.0 | 80.0  | 40.0 | 2.5 | 6.0 | 11.0 |
| 63.0      | 82.0  | 75.0 | 83.0  | 40.0 | 2.5 | 6.0 | 11.0 |
| 65.0      | 84.0  | 77.0 | 85.0  | 48.0 | 2.5 | 6.0 | 11.0 |
| 68.0      | 87.0  | 81.0 | 90.0  | 48.0 | 2.5 | 7.0 | 11.3 |
| 70.0      | 90.0  | 83.0 | 92.0  | 48.0 | 2.5 | 7.0 | 11.3 |
| 75.0      | 96.0  | 88.0 | 97.0  | 65.0 | 2.5 | 7.0 | 11.3 |
| 80.0      | 102.0 | 95.0 | 105.0 | 65.0 | 3.0 | 7.0 | 12.0 |

Due to continuous improvement specifications and dimensions may change without prior notice.